

East End

COMMUNITY FOUNDATION



East London Funders Fair 2023
12 September 2023

Presenters: Juspal Bansal (Grants Officer) and Lauren Rosenfeld (Grants Officer)

Things we'll cover...

- About East End Community Foundation (EECF)
- Grants programmes administered by EECF
- Eligibility
- The grant process
- How to best stay connected
- Lots of time for Questions & Answers (Q&A)

About EECF...

EECF is a local grant maker. We award our own grants and administer funding programmes for third parties, supporting organisations working in **Hackney, Newham, Tower Hamlets and City of London.**

EECF's mission is to ensure that all local residents and communities have equal access to the wealth of opportunities that surround them and be a needs-led funder.

EECF is a part of the UK Community Foundations network. **Each year we grant approx. £1.4 million to voluntary groups through 20 different grant programmes run at different times over the year.** These programmes are independent from each other with different priorities, donors and decision makers.



About EECF...

EECF Funds

We have our own funds, with priorities set by our Board

- **For example:** EECF has made grants to groups working with young people on wellbeing and employment and older people on pensioner poverty

Donor Funds

A large part of our work is delivering and managing programmes on behalf of others e.g. Councils, Corporate Donors, National Grant Bodies and Individuals.

- **For example:** This past year we piloted a grant programme on social prescribing with NHS North East London



About EECF...

Priorities and criteria for each programme are different. However, broadly EECF priorities are:

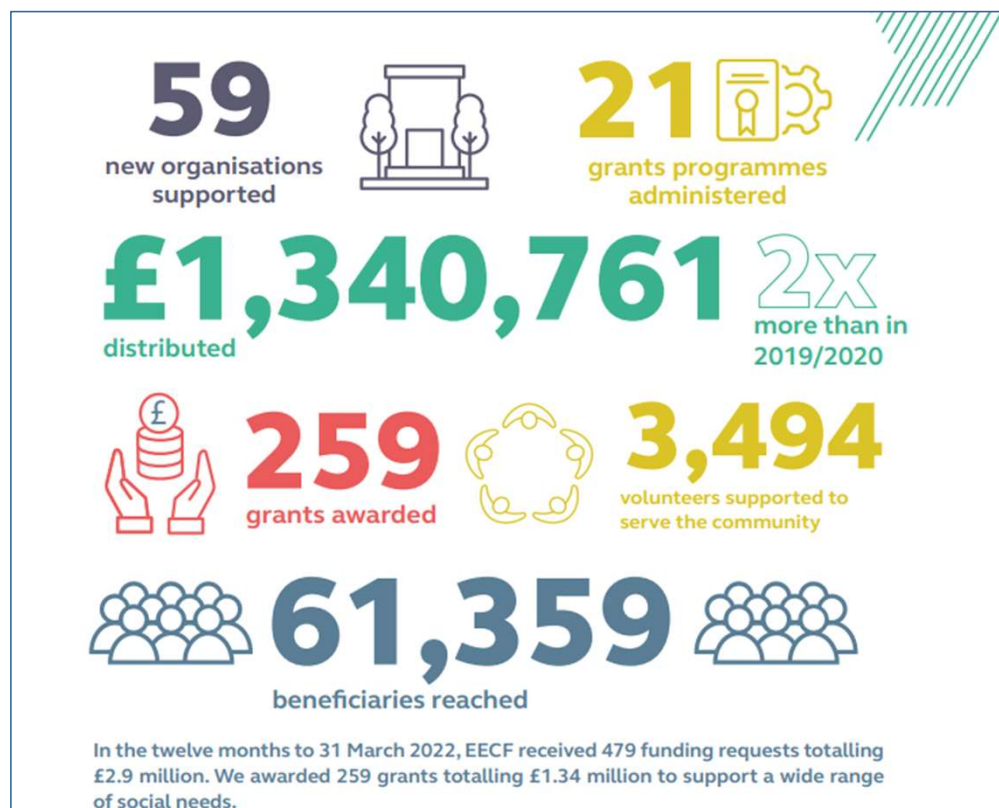
- **Increase employability and employment opportunities**
- **Digital Inclusion and support for older people**
- **Improve wellbeing, reduce isolation and tackle inequality**
- **Support positive activities for young people**

The grants we have administered vary in size, anywhere from about £250 to £30,000. A typical grant size is £5-10K.

EECF has a board of trustees drawn from the business, public and charitable sector including community representatives local to the areas in which we operate. We have a staff team of 10-13 people. There are 4 staff on the Grants Team.

About EECF...

In the last fiscal year (1 April 2022 – 31 March 2023):



You can view a list of all grants awarded on the EECF website

Eligibility to apply for a grant...

To be eligible to apply to any programme you should be:

- A not-for-profit organisation working across, or within, the London boroughs of Hackney, Newham, Tower Hamlets and/or City of London
- Be constituted i.e. have a signed governing document in your group's name
 - **This includes:** unincorporated associations and community groups, registered charities, social enterprises, Community Interest Companies (CIC) limited by guarantee, Charitable Incorporated Organisations (CIO), companies limited by guarantee and faith groups among others.
 - You should have two to three independent board of trustees/directors (depending on the size of the award)
- For some programmes you can be an un-constituted group i.e. a group of residents doing community work
 - Un-constituted groups will need to identify a constituted organisation to act as their accountable body or 'parent organisation'.

Eligibility...

Applicants should have:

- A governing document (e.g. constitution, articles of association)
- Good financial management procedures (e.g. annual accounts or a record of income and expenditure)
- A bank account in the name of the organisation
- An Equality and Diversity policy
- A Safeguarding policy in place if working with children and young people under 18 or vulnerable adults

We cannot accept applications from:

- For-profit organisations or private companies
- Individuals seeking funding for personal benefit, or sole traders
- Organisations based outside the UK



If you're unsure about any of these requirements, please feel free to chat with us before you apply for a grant.

We support many small, grassroots groups and our expectations aim to be proportional to the size and type of organisation.

Application Process...

EECF has open grant programmes throughout the year.

- **It's best to sign up to our community newsletter or check our website. We aim to give groups at least two months to apply for a grant once it's been opened.**
- When a programme is opened the following will be available:
 - Full Guidelines so you can identify if the opportunity is right for your project
 - A link to the **online application form**. You can view questions ahead of time before the deadline to plan your answers before you submit online. A paper version of a form can be provided on request.

Once you apply for a grant, the outcome from your application can take **2-3 months from application closing date**. **When applying for funding, we suggest it's for a project that is taking place at 4-6 months from when you applied.**

Application Process...

An example of a grant programme schedule:

Grant Programme Launch date: Mon 5 February 2024

Stays open for applications: 2 months

Application Deadline: 12pm Noon on Mon 1 April 2024

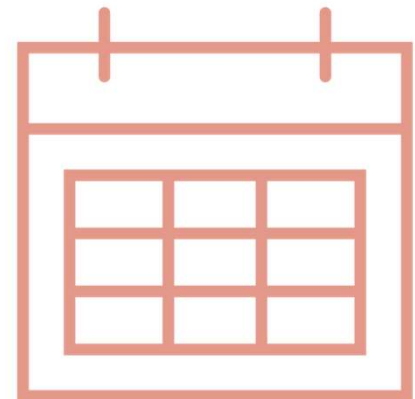
EECF Grant Assessment Time: 4 weeks

Grants Presented to Panel: Wed 1 May 2024

Outcomes communicated to all applicants: Mon 6 May 2024

Offer letters accepted and grants paid: June 2024

Projects can start running in June-July 2024



Example Grants

Wellbeing Grants for Young People – Summer 2023

Supporting positive summer activities for children and young people across Hackney, Newham, Tower Hamlets and City of London

Grants available: Up to £10,000

£100,000 was awarded to 20 projects delivering summer activities across East London



Example Grants

Isle of Dogs Grants Chest & Millwall Park Endowment Fund

This is an annual programme funded by an EECF endowment. Applications are accepted on a rolling basis when the fund is open. This programme supports projects local to the Isle of Dogs and South Poplar that respond to a community need in the area. It also supports projects for and around Millwall Park.

Grants available: Up to £10,000

For example, last year this Fund granted £5,000 to The Space Theatre on the Isle of Dogs as a contribution to their lift purchase to make their venue more accessible.



Application Process

While our application questions will be specific to each granting programme, overall, our application forms will ask questions around the following:

- 1. How your project matches the grant programme**
- 2. Project Plan** - who, what, where, when, how
- 3. Budget** – groups can apply for a mix of operational, staff, volunteer, capital and overhead costs associated with the project
- 3. Demonstrating Need**
- 4. Track Record & Ability to Deliver**
- 5. Identifying and Monitoring Outcomes**

Application Process

Many of our grant programmes can be **oversubscribed**. Even some strong projects cannot be funded as the budget is smaller than total amount requested. When prioritising between fundable projects, the following can be considered as priority:

- **Size;** smaller organisations with an income under £1 million
- **Filling a gap in reach;** Projects that are engaging with a beneficiary group that other applications are not reaching (such as a project for young people with learning disabilities, a wellbeing project for carers, or a project to reduce isolation with older Somali women)
- **Locally based;** Organisations that have demonstrated being community-led and highly engaged with the area the project is taking place in
- **Project Plan;** Strong project plans and corresponding budget
- **Collective impact of programme;** Funding projects that allow for the granting programme to reach a diverse and wide beneficiary and geographic reach throughout the borough(s)

When awarded a grant...

While it depends on the grant programme you can usually expect the following with EECF:

- **Check-in call and/or a project visit**
- **Interim Status Report** (dependent on grant size and programme)
- **End of Grant Reporting** –this report will directly relate back to your project plan, budget and stated outcomes from the application form. Please do set realistic targets and outcomes when applying for a grant and update EECF along the way if there are any changes after funding has been awarded.

Usually, a grant is to be spent within 12-months of being received. We try and be flexible with reporting extensions from groups who had to change their delivery timescales. However, extensions vary depending on when EECF needs to report to the donor.



Stay Connected...

The EECF team is available by phone and email. Please do give us a ring if you have any questions on an open grants programme, want to share updates on your work or questions/concerns on reporting.

- Get in touch – grants@eastendcf.org
 - Harry Lawrence – Grants Administrator
 - Juspal Bansal – Grants Officer
 - Lauren Rosenfeld – Grants Officer
 - Allan Anderson – Head of Grants and Programmes
- Visit the [EECF website](#) for open applications
- Sign up to our [community newsletter](#) to stay tuned to upcoming funding opportunities and more
- Follow us on Twitter at [@EastEnd_CF](#)

THANK YOU for the great work you do!



Q & A