



# The National Lottery Heritage Fund

East London Funders' Fair  
12.09.2023

Cris Vasconcelos Ferreira  
Patricia Lichst  
Engagement Managers  
London & South



## Who we are and what we do

As the largest funder for the UK's heritage, our vision is for heritage to be valued, cared for and sustained for everyone, now and in the future





# Strategy 2033

Priorities for heritage for the next 10 years

Available at [heritagefund.org.uk](https://heritagefund.org.uk)



## Heritage 2033

Our 10-year strategy





# Investment Principles

Funding we distribute comes from National Lottery players

All projects we fund need to involve people actively in heritage

Here are the 4 Principles that will guide future investment

## Our investment principles

Four new investment principles will guide all our decision making through open programme funding, our strategic investments or when entering new collaborations and partnerships.



Saving heritage



Protecting the environment



Inclusion, access and participation



Organisational sustainability



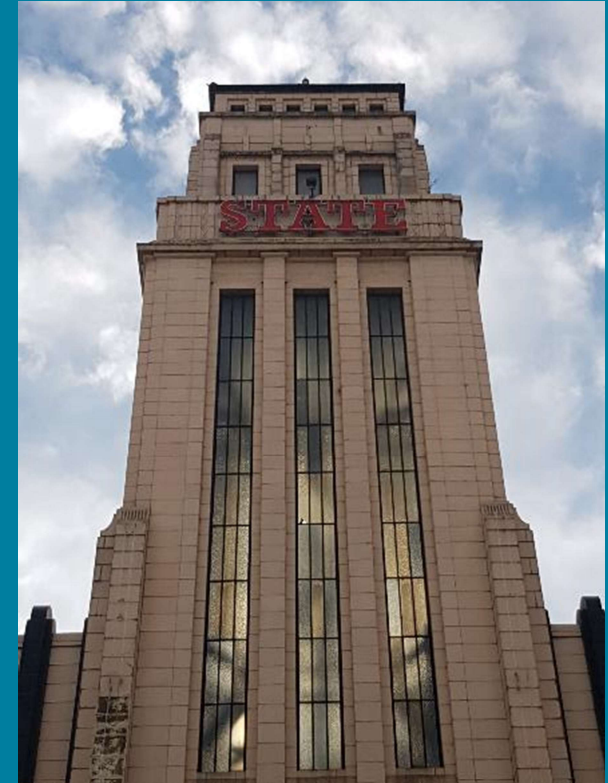
## What is heritage?

From historic buildings, our industrial legacy and the natural environment, to collections, traditions, stories and more – heritage can be anything from the past that you value and want to pass on to future generations.





# What is heritage?



# Built Heritage

**The Ragged School  
Museum**



**Old Town Hall  
Stratford**







# Community Heritage

The history of your local area or organisation

**NEWHAM**  
HERITAGE MONTH

*Newham Heritage Month*

Cultural Traditions like dance or food



*IROKO Theatre –  
Speaking without Voice*



# Nature and Landscape

Improve habitats and  
conserve species



*Friendship Society—  
Where will the bees and  
beetles go?*

Using nature to improve  
well-being



*Barking Park*

# Industrial, Maritime and Transport Heritage



*Sugar Girls, The Women Workers of  
Tate & Lyle Factory, Silvertown*



# Museums, Libraries and Archives

Hackney Museum







# Who can apply?

- Charities, trusts, charitable incorporated organisations
- Community and voluntary groups
- Community/parish councils
- Community interest companies
- Faith-based or church organisations
- Other public sector organisations





**We want to support more East London heritage!**

Have an idea? Have an informal chat with us to find out more

[Patricia.Lichst@heritagefund.org.uk](mailto:Patricia.Lichst@heritagefund.org.uk)

[Cris.Vasfer@heritagefund.org.uk](mailto:Cris.Vasfer@heritagefund.org.uk)

[Rebecca.hussein@heritagefund.org.uk](mailto:Rebecca.hussein@heritagefund.org.uk)

**Thank you!**

